

# Every Drop Counts

Presented by:

Kim Benedict, City of Lacey

Kelsey Browne, LOTT Clean Water Alliance

Margi Mann, St. Mark Lutheran Church

Wendy Steffensen, LOTT Clean Water Alliance



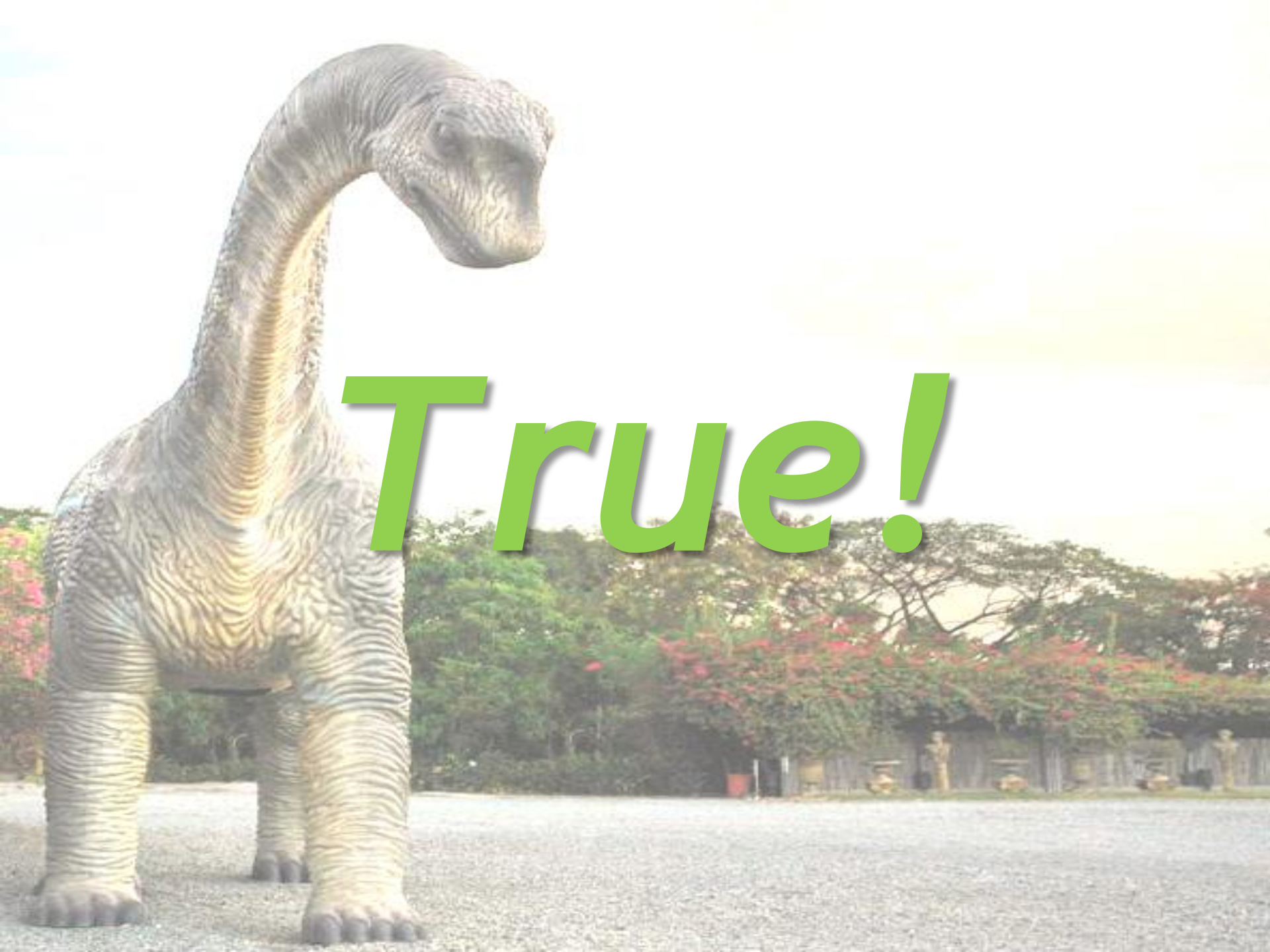
*Shaping  
our community  
together*

CITY  
OF **LACEY**

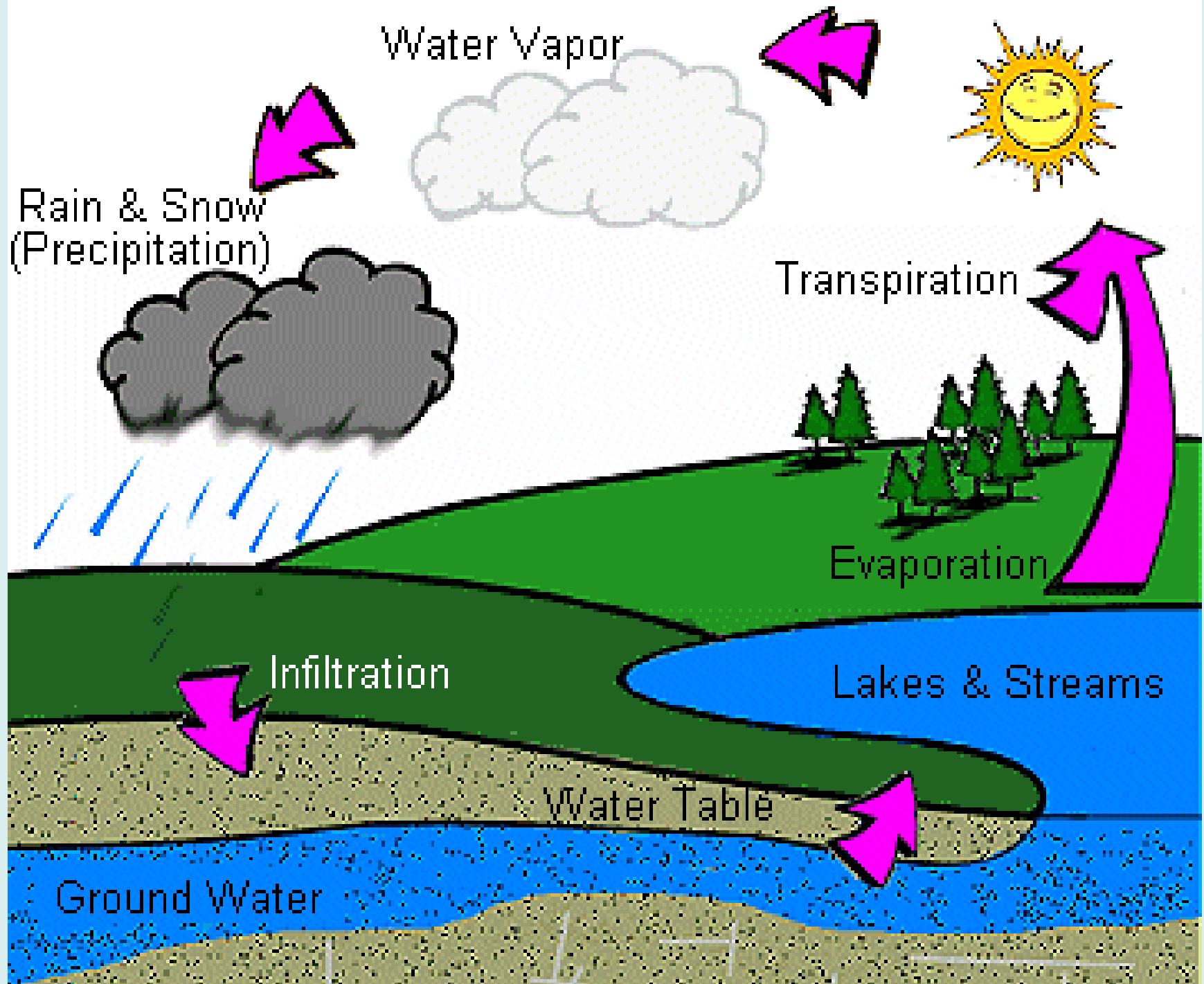


# True or False?

The water you drink today is  
the same water the  
dinosaurs drank millions of  
years ago





*True!*





# Water 101: The Blue Planet



 Salt Water **96.5%**  
 Fresh Water **3.5%**

## Breakdown of Earth's Water (%)

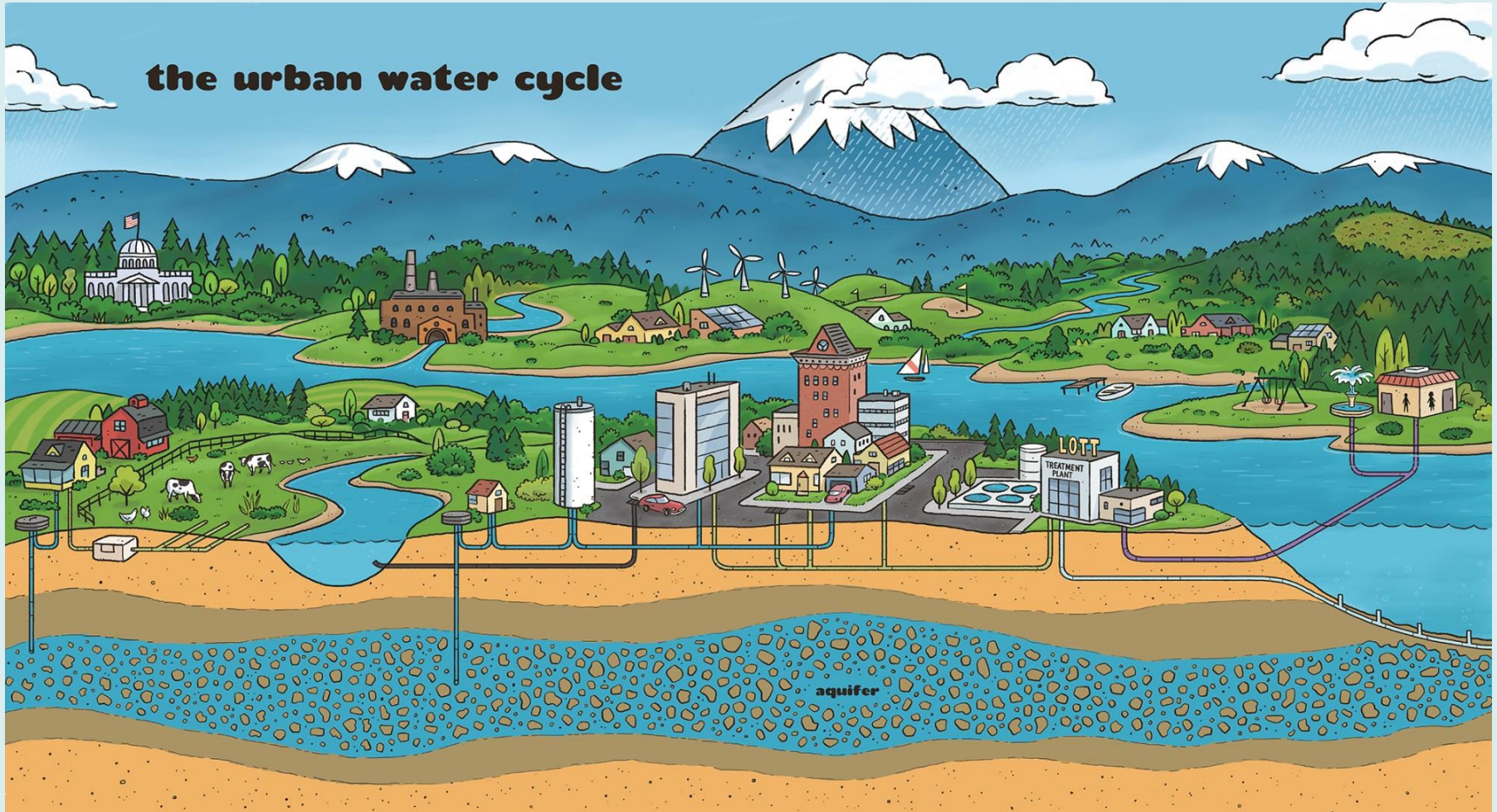
Oceans	96.5
Permanent Ice & Snow	1.7
Groundwater	1.7
Lakes & Rivers	0.014
Atmosphere	0.0001

## Breakdown of Fresh Water (%)

Permanent Ice & Snow	68.7
Groundwater	30.1
Lakes & Rivers	0.3

Source: USGS

# The 21<sup>st</sup> Century Water Cycle



# Drinking Water

Comes from 2 main  
places on earth:

- 1. Surface Water**  
*(lakes and rivers)*
- 2. Groundwater**  
*(underground aquifers)*





# Groundwater Quiz

How much of Lacey's drinking water comes from groundwater?

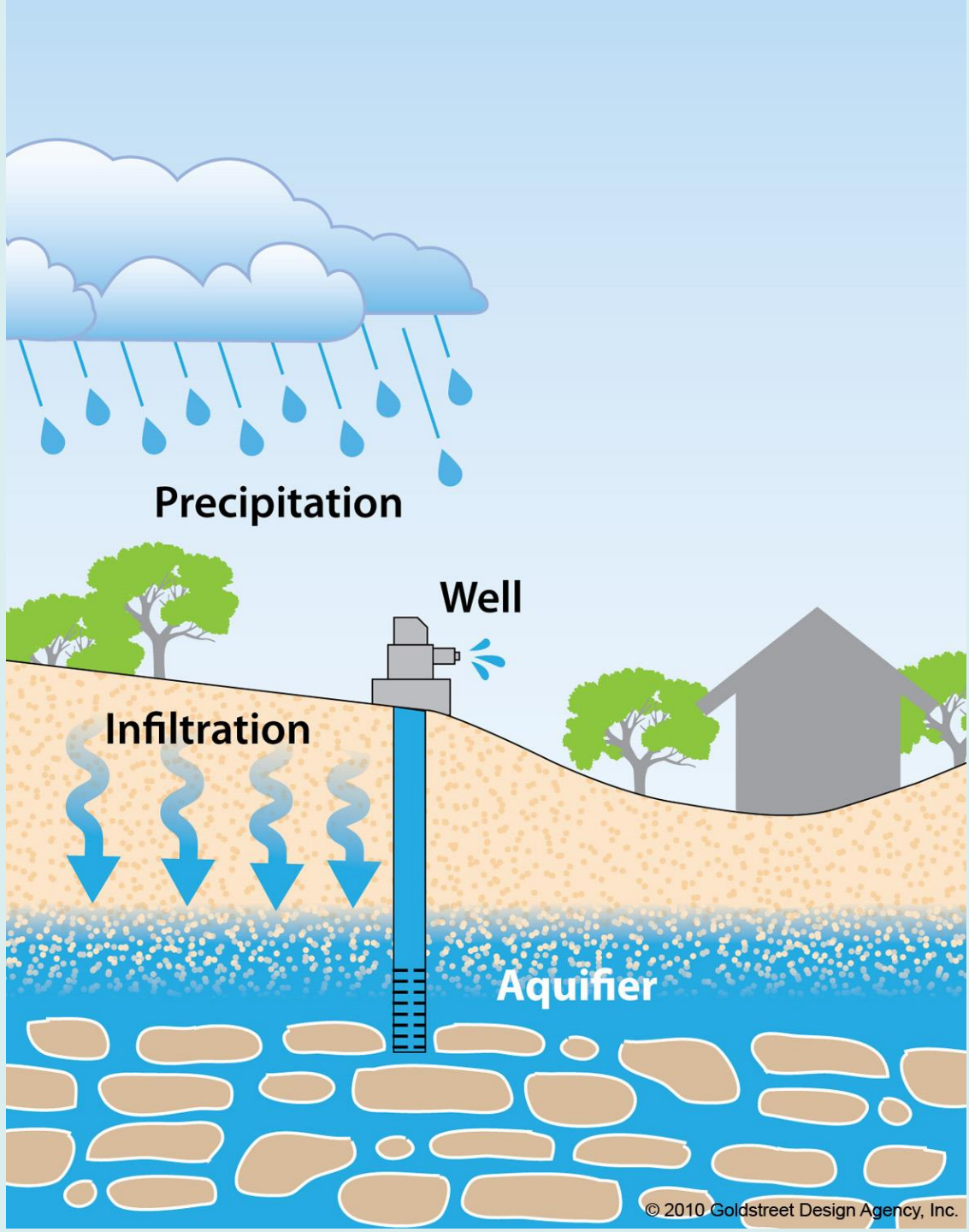
- a) 25%
- b) 50%
- c) 100%
- d) None



# Groundwater Quiz

How much of Lacey's drinking water comes from groundwater?

- a) 25%
- b) 50%
- c) 100%**
- d) None



# Wastewater

Water that leaves your house  
in a pipe becomes wastewater



# What is LOTT?

Lacey

Olympia

Tumwater

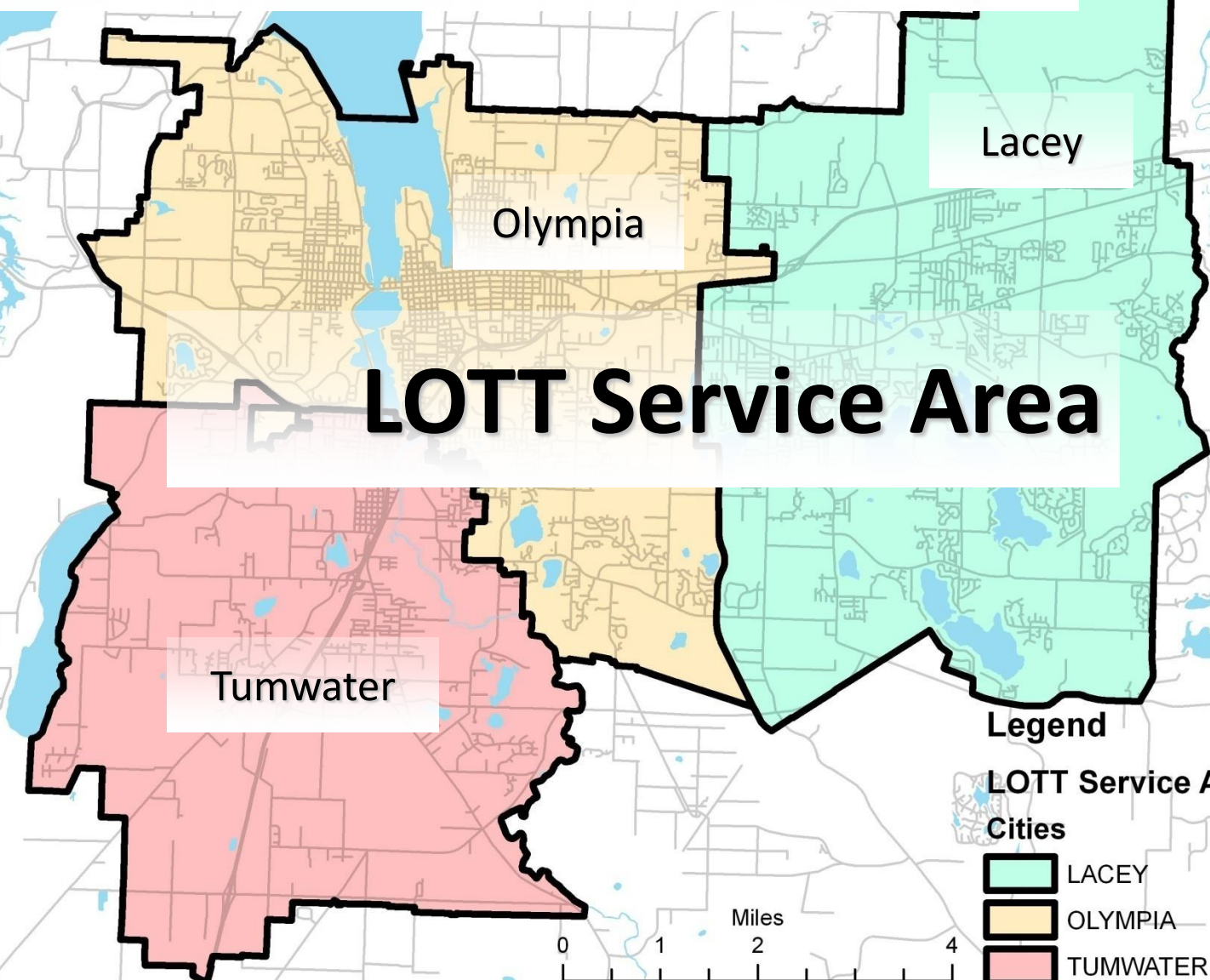
Thurston County



**Mission:** Preserve and protect public health and the environment by cleaning and restoring water resources for our communities



**Sewered Residential Population 119,473**  
**Total Residential Population 171,804**



# LOTT Service Area

Lacey

Olympia

Tumwater

### Legend

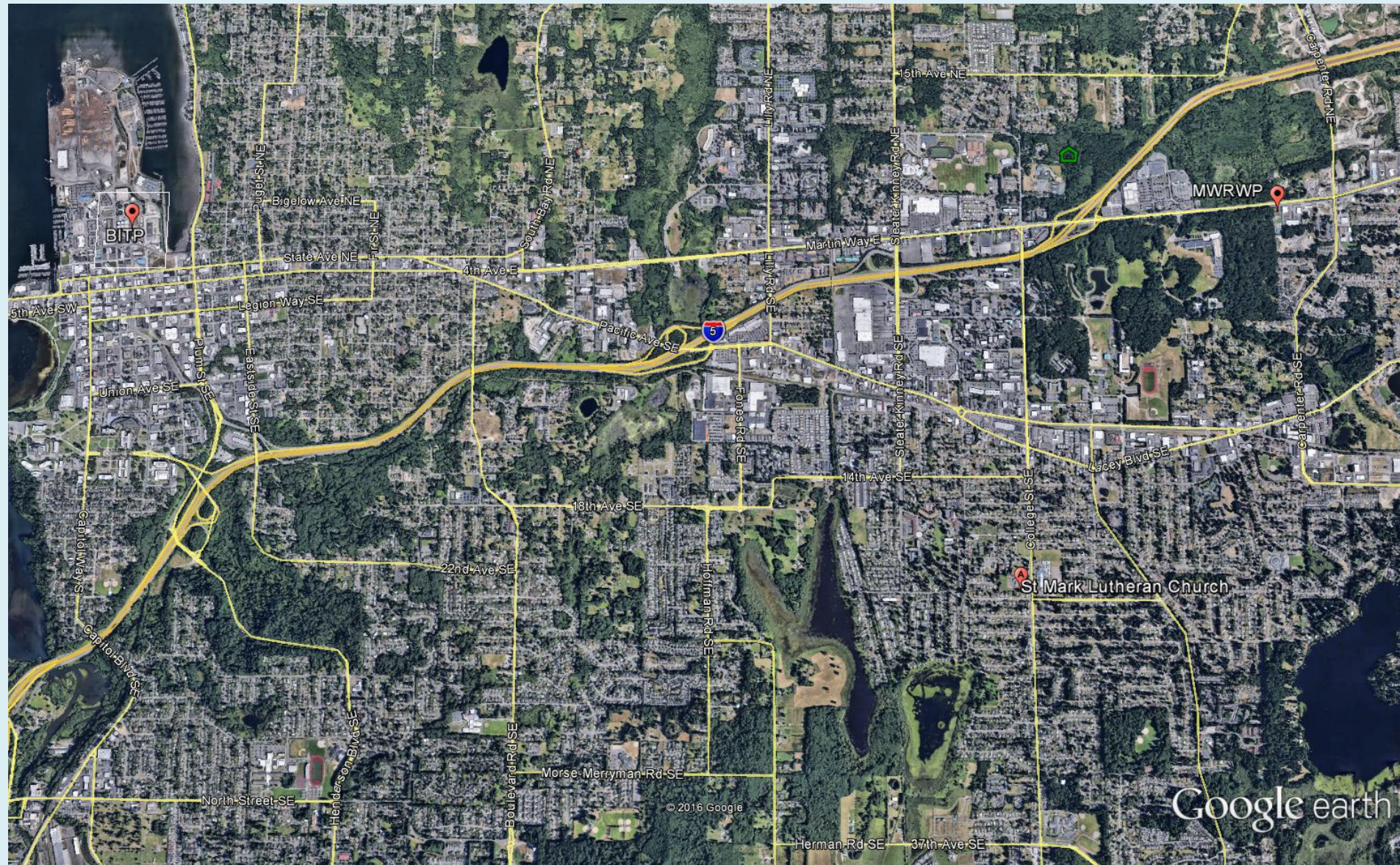
**LOTT Service Area**

**Cities**

-  LACEY
-  OLYMPIA
-  TUMWATER







© 2016 Google

Google earth



An aerial photograph showing the Budd Inlet Treatment Plant (LOT's Central Wastewater Plant) and its outfall to Puget Sound. The plant is located on a peninsula, with a large marina filled with boats to its right. The outfall is a long, narrow structure extending into the water, circled in red. The surrounding area includes residential buildings, parking lots, and a large construction site. The background shows a vast expanse of Puget Sound and distant mountains.

**LOT's Outfall to Puget Sound**

**Budd Inlet  
Treatment Plant**  
LOT's Central Wastewater Plant

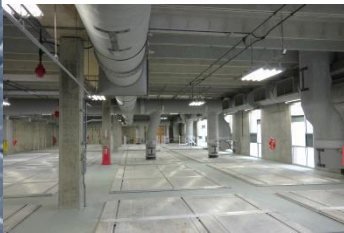


# How Does LOTT Clean Wastewater?

**Trash & Grit Removal**



**Primary Clarifier**



**Aeration & Anoxic Basins**



**Secondary Clarifiers**



**OUTPUT:  
Reclaimed  
Water**



**Reclaimed Water  
Plant**



**OUTPUT:  
Clean Water  
to Budd Inlet**



**UV Disinfection**



**Digesters**

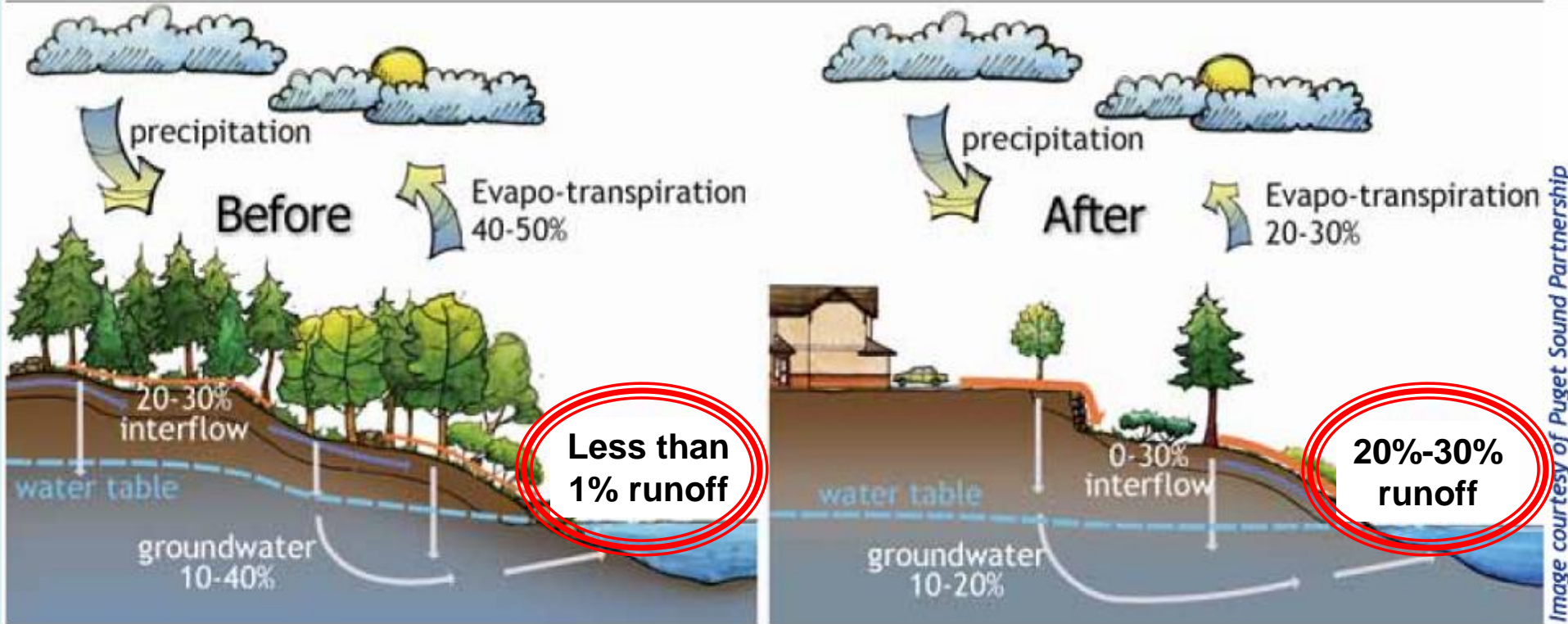


**Outputs:  
Biosolids & Energy**





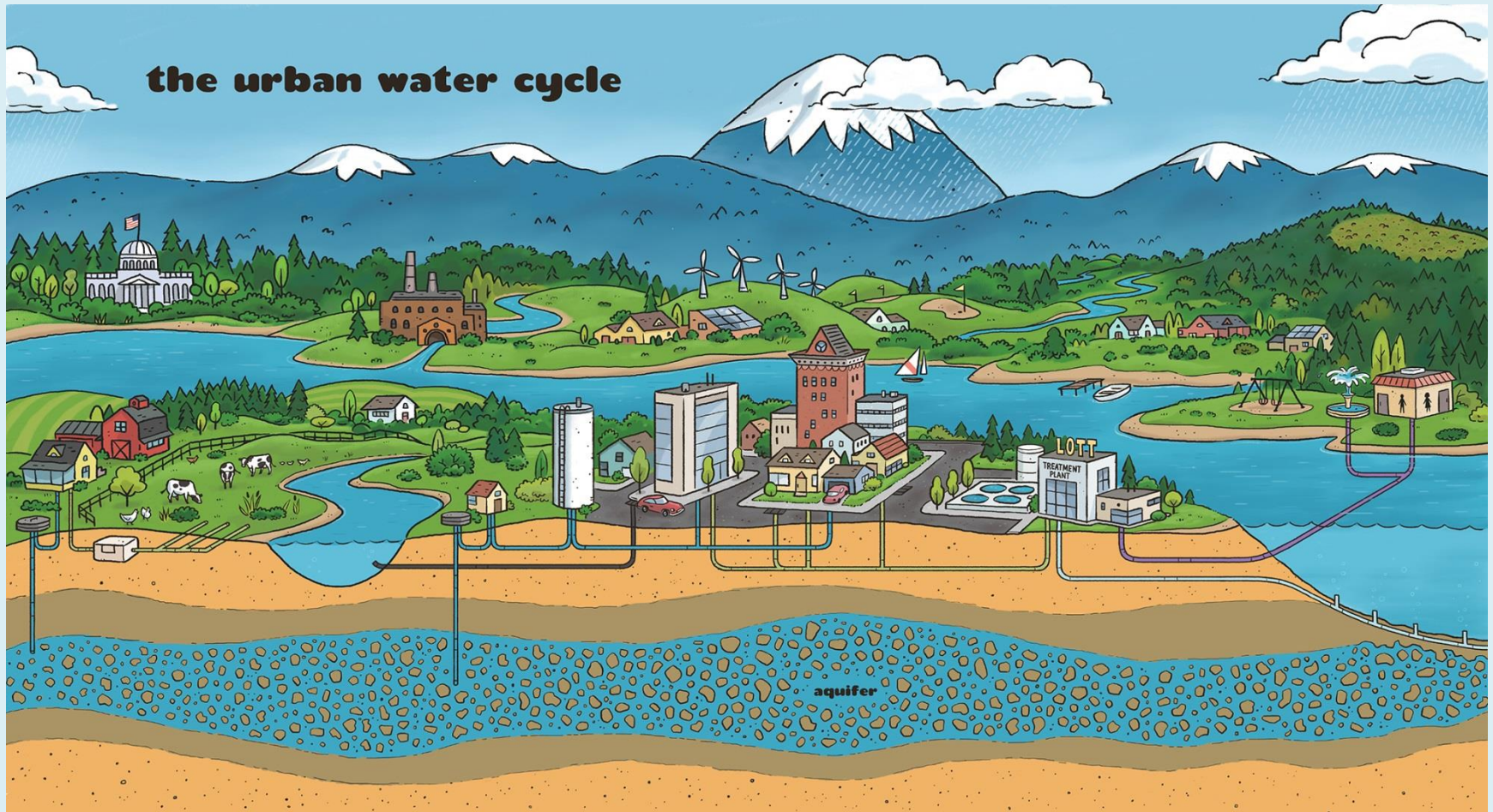
# Stormwater







# The 21<sup>st</sup> Century Water Cycle





# How Can You Help Save Water?

- Drinking Water
  - Outdoor
  - Indoor
- Wastewater
  - Regional (LOTT)
  - Local (Lacey)



# Water Conservation Quiz

How much total water is used by Lacey customers during an average *winter* day?

- a) 100,000 gallons a day
- b) 5 million gallons a day
- c) 1 million gallons a day
- d) 8 million gallons a day

# Water Conservation Quiz

How much total water is used by Lacey customers during an average *winter* day?

- a) 100,000 gallons a day
- b) 5 million gallons a day**
- c) 1 million gallons a day
- d) 30 million gallons a day

# Water Conservation Quiz

How much total water is used by Lacey customers during an average *summer* day?

- a) 6 million gallons a day
- b) 11.5 million gallons a day
- c) 17.2 million gallons a day
- d) 30.4 million gallons a day

# Water Conservation Quiz

How much total water is used by Lacey customers during an average *summer* day?

- a) 6 million gallons a day
- b) 11.5 million gallons a day**
- c) 17.2 million gallons a day
- d) 30.4 million gallons a day





# Outdoor Watering Schedule for ALL LACEY WATER CUSTOMERS

Schedule enforced: Annually, June 1 through September 30

Addresses ending in EVEN numbers

**0 2 4 6 8**

water: **Sundays, Tuesdays,  
and Thursdays**

Addresses ending in ODD numbers

**1 3 5 7 9**

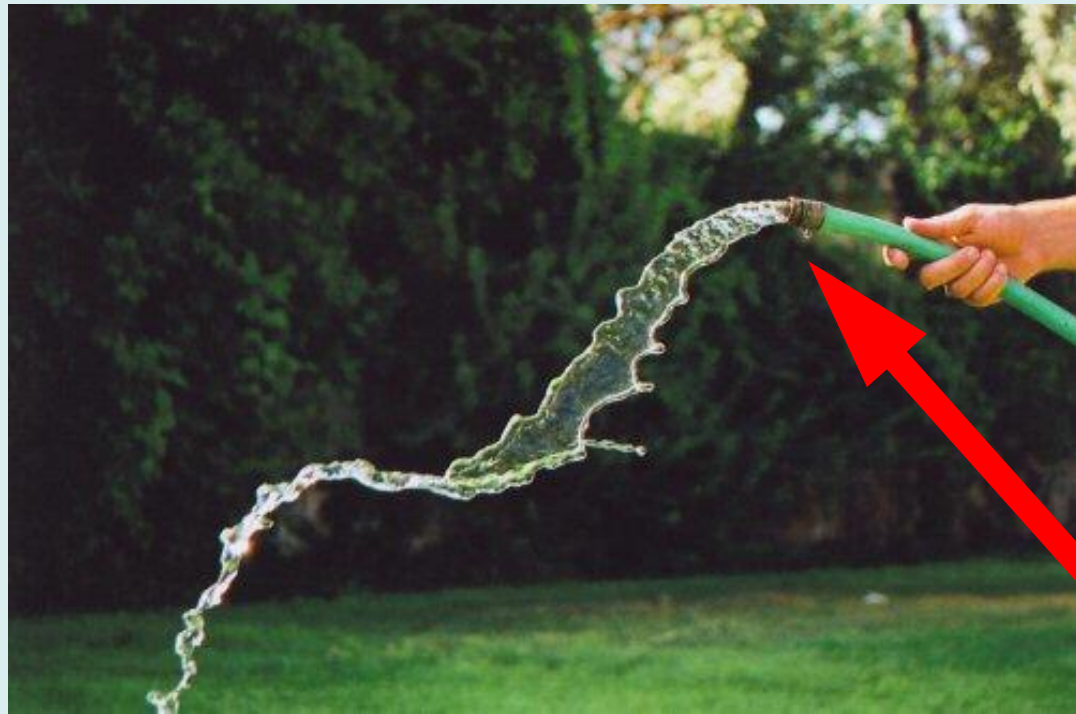
water: **Saturdays, Mondays,  
and Wednesdays**

**FRIDAY is a non-watering day for ALL Lacey water customers!**

**FREE REMINDER MAGNET! Pick one up from the front counter  
at Lacey City Hall (420 College St SE, Lacey).**

For more information on the outdoor watering policy, or to request a variance or exemption, call Lacey Water Resources at 360 491-5600, email [WaterResources@ci.lacey.wa.us](mailto:WaterResources@ci.lacey.wa.us) or visit [www.ci.lacey.wa.us/odd-even](http://www.ci.lacey.wa.us/odd-even).

# Outdoor Water Use – How Can You Save Water Here?





# Outdoor Water Use – How Can You Save Water Here?



# Free Outdoor Water Conservation Kits





# Commercial Irrigation Rebate Program

Lacey will pay up to 50% of the cost of irrigation system upgrades that conserve water.



Maximum rebate depends on the number and size of irrigation meters.

# Indoor Water Use – How Can You Save Water Here?



# Indoor Water Use – How Can You Save Water Here?





# Lacey Programs

## Outdoor Conservation

### Tiered Water Rates

(Water Conservation Rates)

Tier 1	\$ = X	← avg home, with indoor use only
Tier 2	\$ = <b>2x</b> Tier 1	← lrg home with some outdoor use
Tier 3	\$ = <b>3x</b> Tier 1	← home with fair outdoor use
Tier 4	\$ = <b>4x</b> Tier 1	← lrg business irrigation or home with excessive outdoor use

# **Water Conservation Program: Wastewater**

- **Regional Programs**
- **Local Programs**

# LOTT Programs

## Regional Sewer Utility

### Residential Rebates

- \$100 High-efficiency toilet rebates
- \$50 Washing machine rebate
- Indoor water saving kits



### Commercial & Institutional Rebates

- \$100 High-efficiency toilet rebate
- WaterSmart rebates for businesses



# Local Programs

# Lacey Programs

Indoor Conservation: For water customers on septic

## **FREE Water Wasting Toilet Replacement**

Lacey provides a FREE High-efficiency toilet to replace old water guzzling toilets that use 3.0 or more gallons per flush.

## **\$50 Rebate for Energy Star Washing Machines**

# Lacey Programs

Indoor Conservation: For water customers on septic

## **FREE Indoor Water Saving Kits**

- 1 low-flow showerhead
  - 1 kitchen aerator
  - 1 bathroom aerator
- 2 toilet leak-detection tablets



# Every Drop Counts

Questions?

Kim Benedict, 360-438-2687

Kelsey Browne, 360-664-2333



*Shaping  
our community  
together*

CITY  
OF **LACEY**



**LOTT**<sup>™</sup>

*Clean Water*

**Alliance**

# **Water Use at St. Mark Lutheran Church**

- **Water Consumption**
  - **Water Costs**
- **Our Water Infrastructure**